

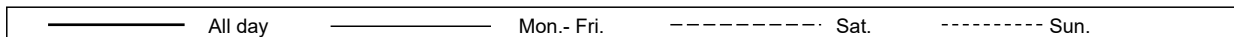
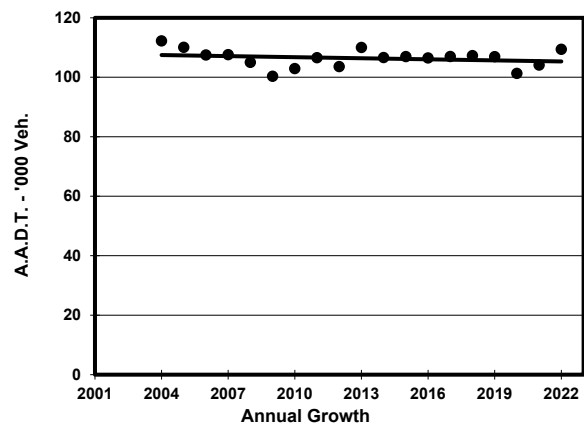
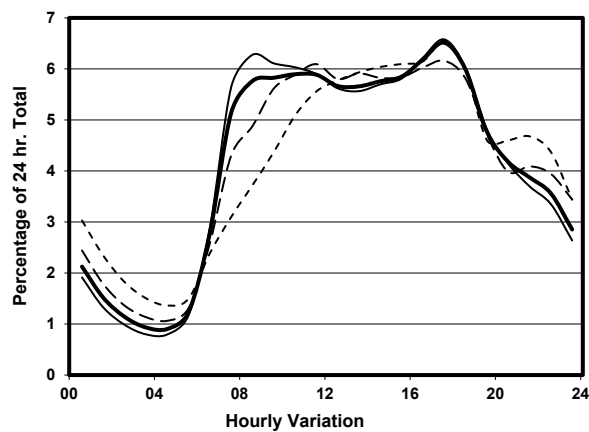
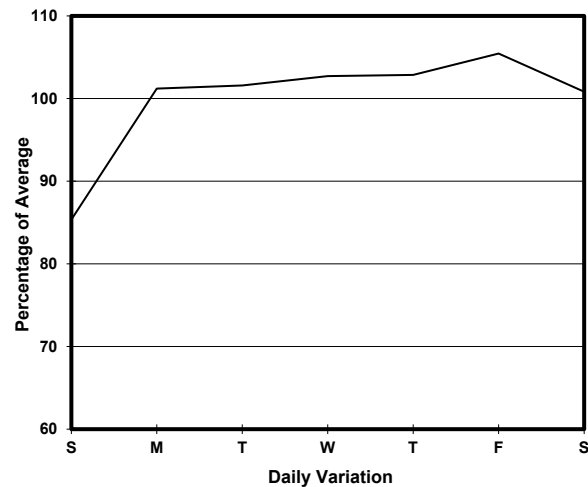
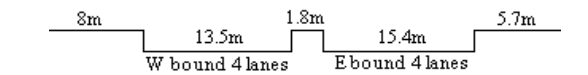
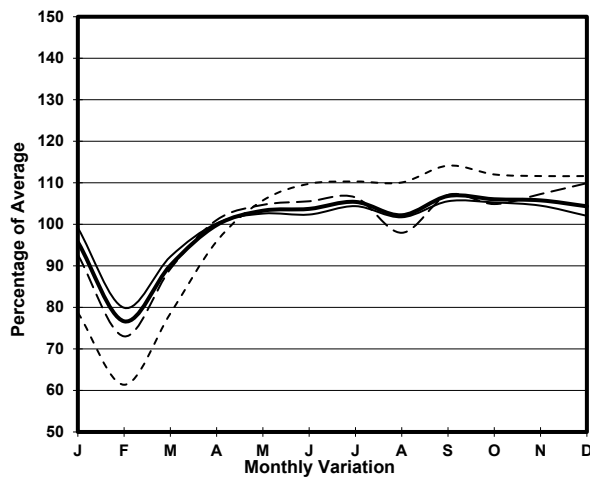
YEAR

2022

LINK LUNG CHEUNG RD (from HAMMER HILL RD to WONG KUK AVE)

CORE STATION
ROAD NETWORK
ROAD TYPE3027
MAJOR
PRIMARY DISTRIBUTOR

1. TRAFFIC FLOW VARIATION AND GROWTH



2. TRAFFIC CHARACTERISTICS (BY DIRECTION)

| Parameter | All - Day | Mon. - Fri. | Sat. | Sun. |
|--------------------------------------|-----------|-------------|-----------|-----------|
| EAST BOUND | | | | |
| A.A.D.T. | 47080 | 48530 | 48120 | 41570 |
| R 12 / 24 - % | 70.3 | 71.7 | 68.3 | 64.3 |
| R 16 / 24 - % | 86.8 | 87.7 | 85.1 | 83.3 |
| AM Peak Hour | 0900-1000 | 0800-0900 | 0900-1000 | 0900-1000 |
| One-way flow at AM peak hour | 2740 | 2980 | 2620 | 1800 |
| T - % (AM) | - | - | - | - |
| PM Peak Hour | 1700-1800 | 1700-1800 | 1700-1800 | 1700-1800 |
| One-way flow at PM peak hour | 3040 | 3170 | 2880 | 2720 |
| T - % (PM) | - | - | - | - |
| Prop.of commercial vehicles - 16 hr. | - | - | - | - |
| WEST BOUND | | | | |
| A.A.D.T. | 62310 | 64970 | 63300 | 51720 |
| R 12 / 24 - % | 70 | 71.3 | 68 | 64.4 |
| R 16 / 24 - % | 86.3 | 87.3 | 84.7 | 82.1 |
| AM Peak Hour | 0800-0900 | 0800-0900 | 0900-1000 | 0900-1000 |
| One-way flow at AM peak hour | 3650 | 4140 | 3640 | 2280 |
| T - % (AM) | - | - | - | - |
| PM Peak Hour | 1700-1800 | 1700-1800 | 1700-1800 | 1700-1800 |
| One-way flow at PM peak hour | 4090 | 4300 | 3990 | 3390 |
| T - % (PM) | - | - | - | - |
| Prop.of commercial vehicles - 16 hr. | - | - | - | - |

3. OTHER INFORMATION AND COMMENT